




32/2-10 Coolgardie St, Elanora, QLD 4221

\$450,000 - \$467,000

Townhouse 3  2  1 



Outstanding North Facing Waterfront Position

Offering exceptional value for money and located in the popular Isle of Palms Resort, this north facing waterfront townhouse is sure to tick all the boxes for the most fastidious buyer.

Open for Inspection

Sat, 23 Jun 2018 - 11:00 AM to 11:40 AM

Whether it be relaxing on your patio taking in the crystal clear water views, paddling a kayak or feeling the sand at your feet fishing this is a lifestyle that will be the envy of your friends and family.

This immaculate townhouse is located on the edge of the tidal Pine Lake.

Featuring:

- Modern kitchen with dishwasher and induction cooktop
- Elegant open plan tiled living with separate dining area
- Stunning alfresco outdoor living area with North facing uninterrupted lake views
- 3 bedrooms all with ceiling fans, built-in robes and the main with balcony overlooking the water
- Uniquely designed study nook
- Compact walk-in attic/storage room
- Modern bathroom upstairs
- Combined Bathroom/laundry with second toilet downstairs
- 2 x reverse cycle air conditioners for year round comfort
- Automatic Single lockup garage
- Private secure front courtyard
- 2.1 Kilowatt solar power
- Insulation
- Council Rates approx \$850 for 6 months; Water Rates approx \$465 for 3 months Body Corp approx \$105.07 perweek

The popular resort complex is superbly situated adjacent to The Pines shopping centre features -

- Well maintained tropical gardens
- Gated security entry
- Sandy beach surrounds the perimeter of the resort
- 2 large in-ground pools, both heated in winter, toddlers wading pool and 2 in-ground spas
- 2 full sized tennis courts

Listed By



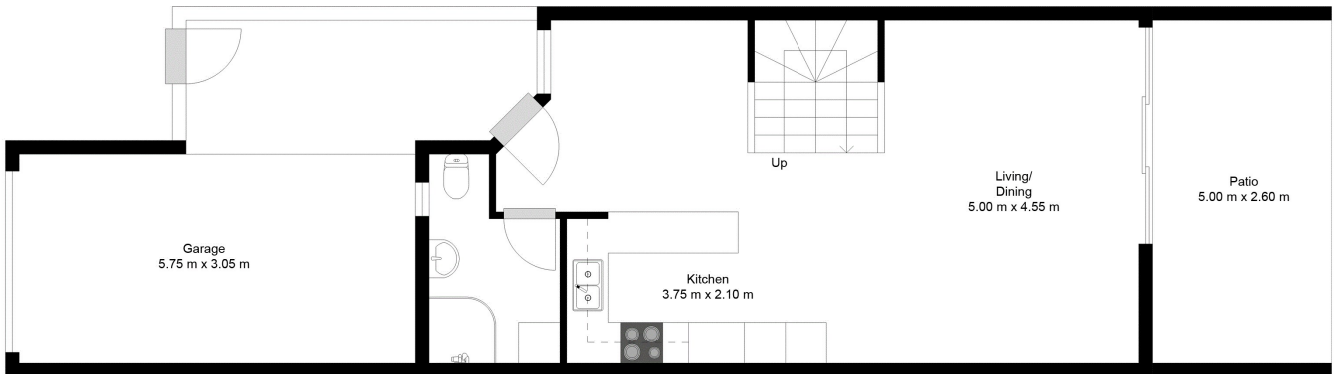
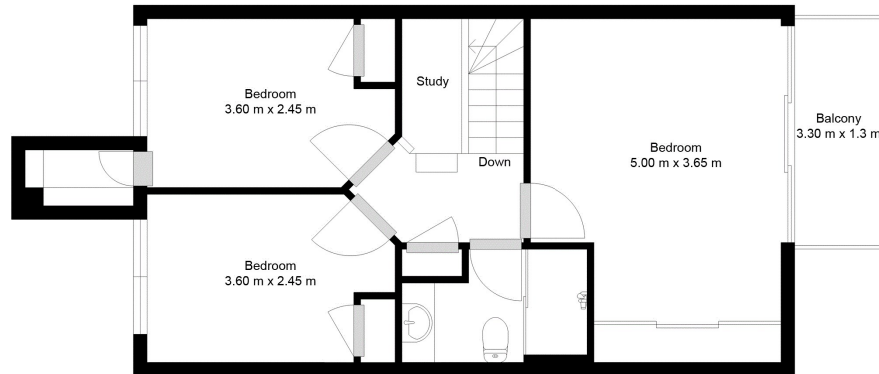
Lorraine O'Brien
Phone: (07) 5522 4488
Mobile: 0412 766 943



Floorplan

32/2 COOLGARDIE STREET

APPROXIMATE GROSS INTERNAL AREA 114 SQ. M.
APPROXIMATE GROSS EXTERNAL AREA 26 SQ. M.



GOLDCOAST
PHOTOGRAPHY